

# PTZOptics MIDI PTZ App

**Designed for use with Digital Audio Workstations (DAW)**

*Control up to 10 cameras with PTZ preset positions using MIDI notes.*

Available Devices:  
None MIDI Transmitter  
PTZ Controls  
MIDI Controller 1

	Refresh	Connect			Stop			Clear		
C	0	32	24	36	48	60	72	84	96	108
C#	1	33	25	37	49	61	73	85	97	109
D	2	34	26	38	50	62	74	86	98	110
D#	3	35	27	39	51	63	75	87	99	111
E	4	36	28	40	52	64	76	88	100	112
F	5	37	29	41	53	65	77	89	101	113
F#	6	38	30	42	54	66	78	90	102	114
G	7	39	31	43	55	67	79	91	103	115
G#	8	40	32	44	56	68	80	92	104	116
A	9	41	33	45	57	69	81	93	105	117
A#	10	42	34	46	58	70	82	94	106	118
B	11	43	35	47	59	71	83	95	107	119

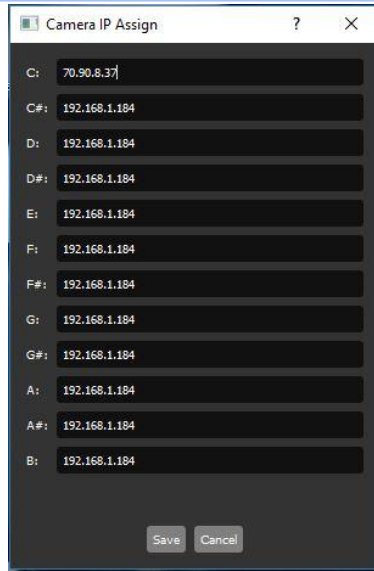
{} midi message received.  
{} midi message received.



# App Features

Available for both PC & Mac

- Software bridge for up to 120 unique MIDI notes
- Each note will call a camera presets for up to 10 cameras with 12 presets each
- MIDI standard design works with almost any DAW (Digital Audio Workstation) or MIDI instrument
- IP Networkable or internal MIDI loopable (see additional software)



# Example Setup Diagram

Available for Mac or PC

Option 1: Internal  
MIDI Loop

DAW  
Software

MIDI IN

PTZOptics MIDI PTZ  
App

PTZ  
Over IP  
Out



Up to 12 Cameras  
with 10 Presets Each

# MIDI Notes for PTZ Controls

## Using MIDI for PTZ Camera Control

- Each note has a unique camera and preset.
- There is a total of 10 cameras each with 12 presets.

Note	Octave										
	-1	0	1	2	3	4	5	6	7	8	9
C	0	12	24	36	48	60	72	84	96	108	120
C#	1	13	25	37	49	61	73	85	97	109	121
D	2	14	26	38	50	62	74	86	98	110	122
D#	3	15	27	39	51	63	75	87	99	111	123
E	4	16	28	40	52	64	76	88	100	112	124
F	5	17	29	41	53	65	77	89	101	113	125
F#	6	18	30	42	54	66	78	90	102	114	126
G	7	19	31	43	55	67	79	91	103	115	127
G#	8	20	32	44	56	68	80	92	104	116	
A	9	21	33	45	57	69	81	93	105	117	
A#	10	22	34	46	58	70	82	94	106	118	
B	11	23	35	47	59	71	83	95	107	119	

# Additional Software Needed

Mac OS 10 High Sierra or later

## Note:

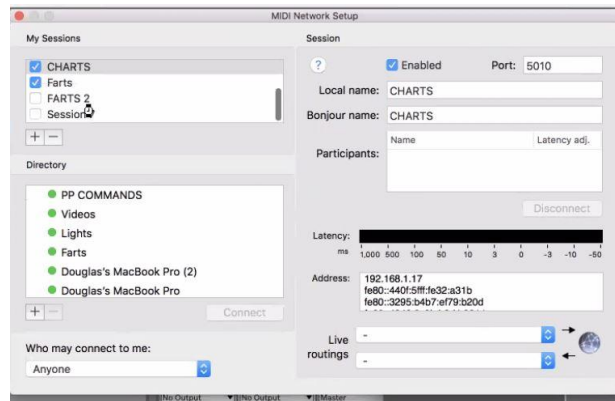
1. Additional MIDI software may be required to send the PTZOptics MIDI PTZ App data from your MIDI system.

## Mac:

1. Internal IAC Driver
2. MIDI Network Setup

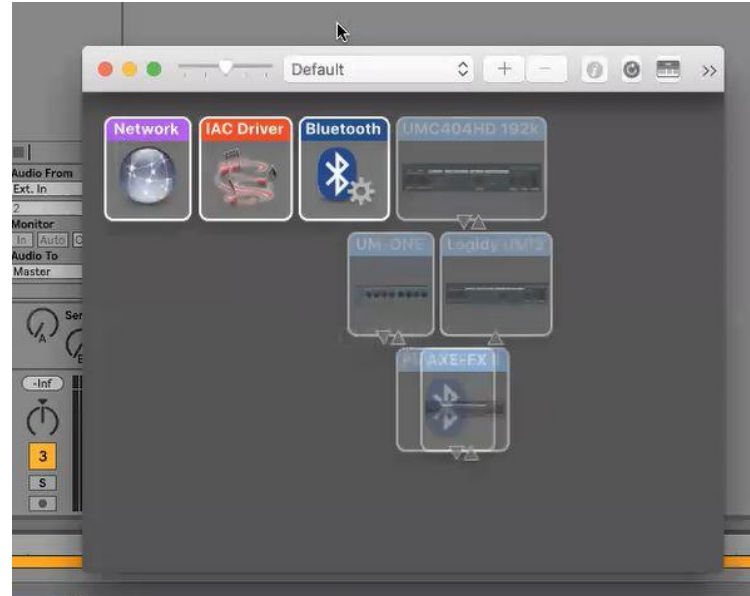
## PC:

1. Internal MIDI Loop - <http://www.nerds.de/en/loopbe1.html>
2. Over the Network - <https://www.tobias-erichsen.de/software/rtpmidi.html>



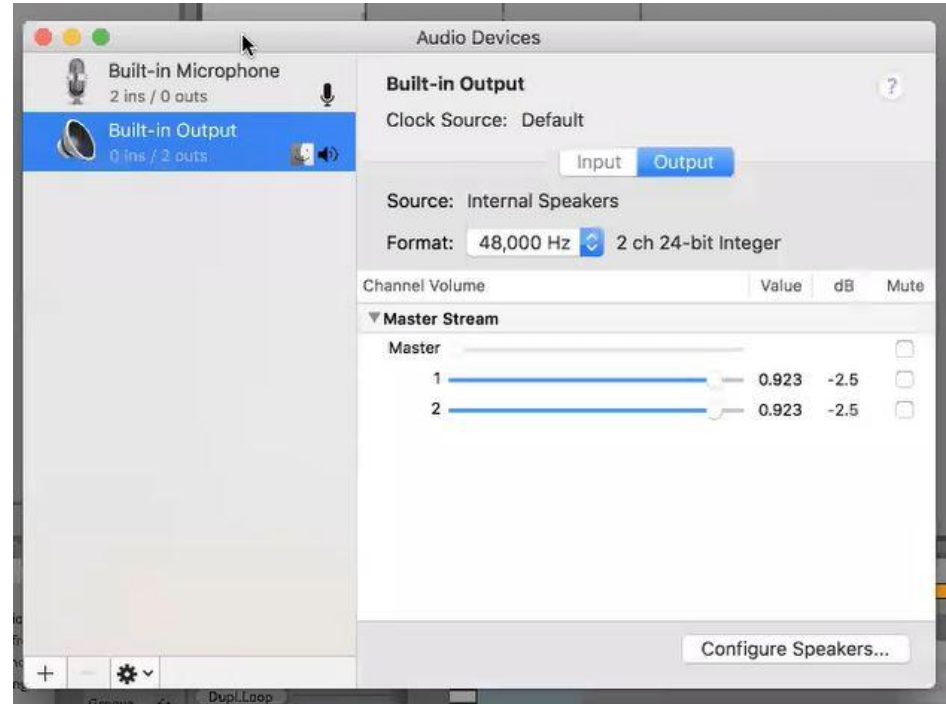
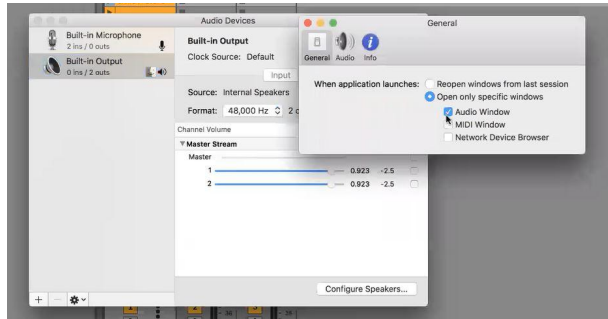
# Mac MIDI Setup

1. Find your Audio MIDI Setup by searching for Audio MIDI Setup
2. Decide whether you want to transmit MIDI over the network (from another computer) or using the same computer with the IAC Driver



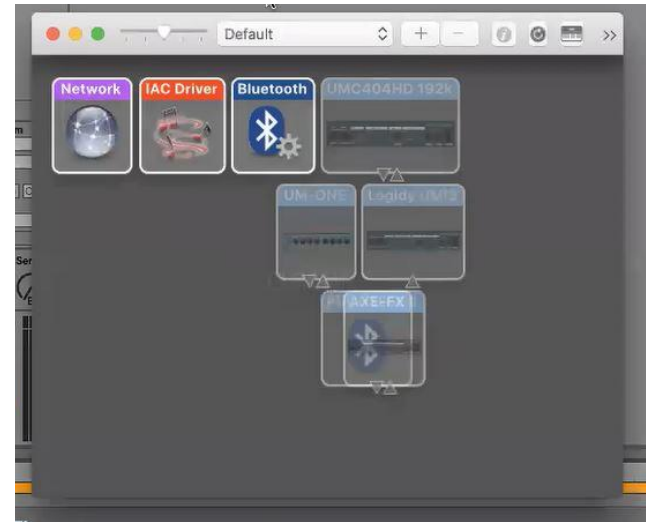
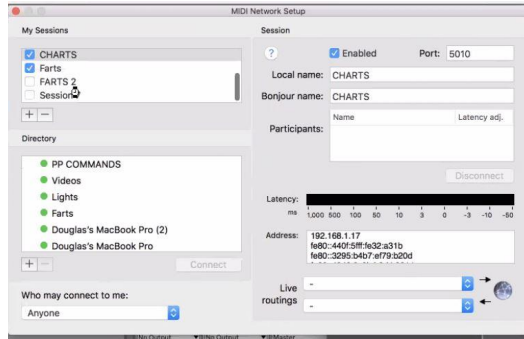
# Mac MIDI Setup

1. When you first open your Audio MIDI Setup you may only see Audio Devices
2. We need to add MIDI Window in settings > general
3. Then restart the program



# Mac MIDI Network Setup

1. Now you can choose network or IAC Driver
2. If you would like to transfer MIDI commands over your network you can create a MIDI network in the Mac “MIDI Network Setup”





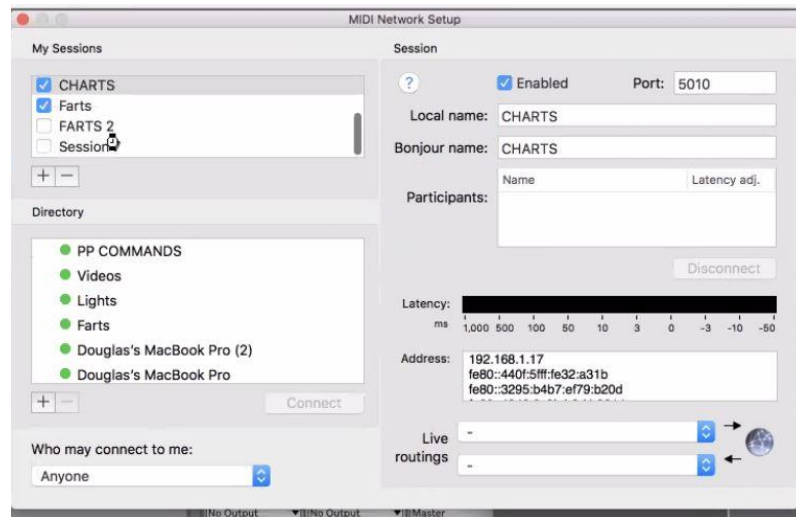
# Mac IAC Driver

1. The IAC Driver can be used to create a MIDI in and out port
2. This MIDI loop can then be selected as the output in your DAW and the input for our software.



# IP MIDI Network (Mac)

1. If you want to send MIDI over your network you can create a session to use with your MIDI Network Setup
2. This will be available as an input/output in your DAW Software



**My Sessions**

- PP Commands
- Videos
- Lights
- CHARTS

**Directory**

- PP COMMANDS
- Videos
- Lights
- Farts
- Douglas's MacBook Pro (2)
- Douglas's MacBook Pro

Who may connect to me:

**Session**

Enabled Port: 5010

Local name: CHARTS

Bonjour name: CHARTS

Participants:

Latency:

Address: 192.168.1.17  
fe80::440f5fff-fe32-a31b  
fe80::3295-b4b7-ef79-b20d

Live routings:

Disconnect

Drop Files and Devices Here

Video thumbnails:

- Paul Richards
- Douglas S. Lawes

Audio Mixer Section:

- 1, 2, 3 (Track numbers)
- Sends (A, B)
- Volume faders

AXE-FX and Logic UMS MIDI Routing:

- AXE-FX (MIDI interface)
- Logic UMS (MIDI interface)
- Routing arrows and connections

Audio Mixer Section (Right):

- Audio To: Master
- Sends (A, B)
- Volume faders
- Post/Solo buttons

**Status Bar**

The Status Bar helps keep you updated on the progress of various program activities.

Clip: C-2

Signature: 4 / 4

Groove: None

Position: 1 | 1 | 1

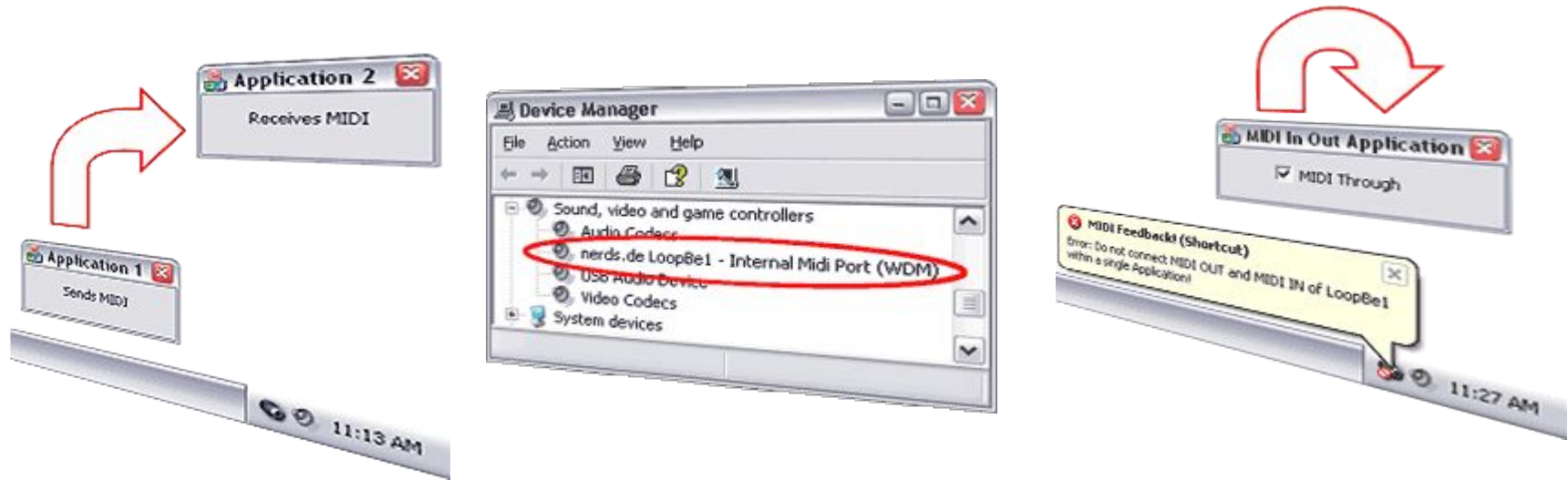
Length: 127

MIDI Piano Roll:

- Notes: C-2
- Start: 1 | 1 | 1
- End: 2 | 1 | 1
- Loop button

# MIDI Setup Windows

1. We are suggesting two applications for sending and receiving MIDI.
  - a. Internal MIDI Loop - <http://www.nerds.de/en/loopbe1.html>
  - b. 2. Over the Network - <https://www.tobias-erichsen.de/software/rtpmidi.html>

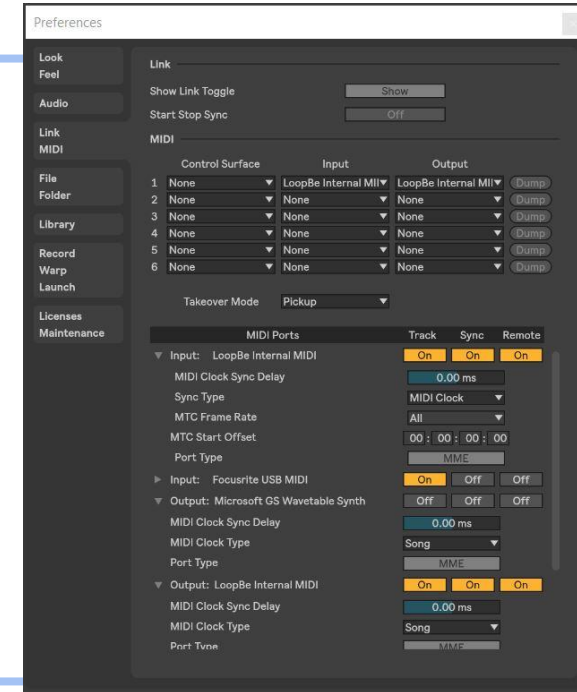
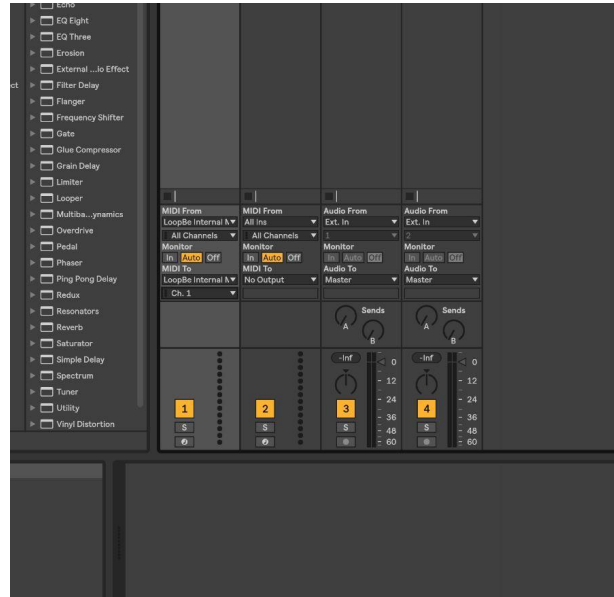


# Loopbe Windows MIDI Driver

Windows 7, 8 or 10 x64

Loopbe can be thought about as a virtual MIDI audio cable that connects multiple applications.

It can easily be used for sending MIDI commands to our app.

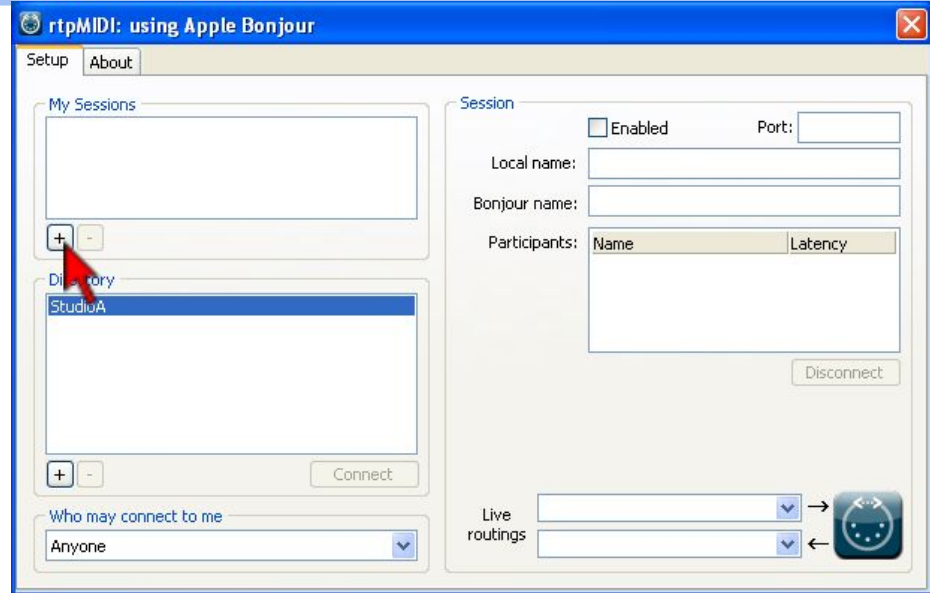


# rtpMIDI Setup

Windows 7, 8 or 10 x64

The rtpMIDI-driver is a virtual MIDI-driver which allows DAW-applications to communicate via network with other computers

rtpMIDI has a great tutorial for setup [here](#).



# Download this app

**PTZOptics.com/MIDI**

---

**The latest version of these applications will always be available for download at the following locations.**

**<https://ptzoptics.com/apps>**