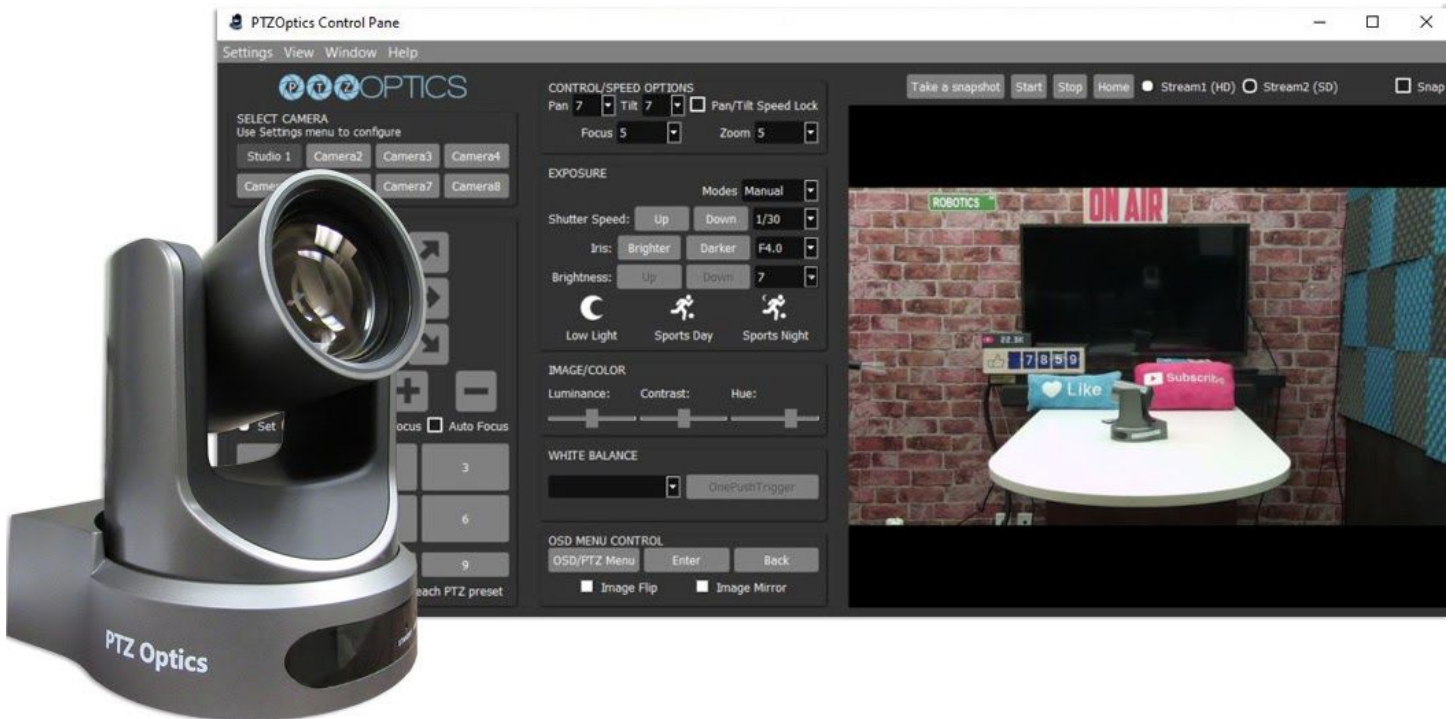


# PTZOptics PTZ Controller v1.3



## User Manual (English)

Please check [PTZOPTICS.com](http://PTZOPTICS.com) for  
the most up to date version of this document  
8/20

Rev 1.5



Share Your Vision

---

## Table of Contents

Supplied Accessories.....	1
Supplied Accessories.....	1
Supplied Accessories.....	1
Supplied Accessories.....	1
Supplied Accessories.....	1

## Preface

Thank you for downloading the PTZOptics PTZ Camera Controller. This application is available for Mac and Windows. It is also available for OBS (Open Broadcaster Software). The OBS plugin adds some additional features such as hotkeys support, but may not include all the functionality available in the main PC and Mac applications.

## Compatible Cameras

This software has been developed to control PTZOptics cameras.

- IP Control
  - ◆ All PTZOptics PTZ camera models
  - ◆ All PTZOptics ZCam camera models
- USB Control
  - ◆ All PTZOptics USB camera models
  - ◆ HuddleCamHD Pro and HuddleCamHD Pro IP

Product Specifications	
<b>Supported OS</b>	Windows 10 32bit/64bit Mac OS - Catalina and later
<b>Recommended Computer Specifications</b>	<b>CPU:</b> Core i5 and above <b>Memory:</b> 4GB and above <b>Display:</b> 1280 x 960 and above (1920 x 1080 and above is recommended)
<b>Supported Cameras</b>	PT12X-ZCAM,PT20X-ZCAM,PT12X-SDI-xx-G2, PT20X-SDI-xx-G2,PT30X-SDI-xx-G2, PT12X-USB-xx-G2, PT20X-USB-xx-G2, (NDI Models also supported)
<b>Supported Devices</b>	Most USB connected Xbox Joysticks work including: Microsoft Xbox 360 Controller, Power A (Model 1414135-02), Amazon Basics Xbox USB joystick (Model 1500890-01)
<b>Display Resolutions</b>	1280x720p, 1920x1080p

## Note

Please update the firmware of your PTZOptics camera to ensure all features of this software operate properly. You can confirm that your camera has the latest firmware at [ptzoptics.com/firmware-finder](http://ptzoptics.com/firmware-finder).



Share Your Vision

---

## Features

- Control up to 8 PTZ Optics cameras over an IP connection (LAN) or USB
- Live Video Preview Mode with automatic camera switching
- Name each unique camera
- Set up to 9 camera presets with image snapshot storage
  - Save up to 6 presets with image snapshots
- Name each unique preset & capture image representations
- Pan, Tilt and Zoom Speeds
  - Pan & Tilt Speed Locks
- Iris Controls
- Focus Controls (With Focus Speed)
- Selectable exposure modes (Auto, Manual, SAE, AAE and Brightness)
- Advanced image controls for Contrast, Luminance, and Hue
- Select between exposure modes
- Flip and Mirror camera image
- On-Screen Display Controls
- Real-time reporting of camera options status
- xBox Joystick Controller Support (PC Only)
- Compact, Advanced and Preview Modes
- Full-Screen Camera Preview Modes (SD & HD Options for bandwidth conservation) (Windows Only)
- Ability to snap and un-snap preview mode to main application
- Ability to take a camera snapshot from preview mode
- Ability to choose if you want to store exposure information with each PTZ preset
- Option to control speeds between PTZ presets
- App now retrieves Serial Number and Camera Info
- Preset Hotkeys



---

## **Installation Process**

### **Windows:**

1. Download Application
2. Run Setup Wizard
3. Open application from Windows Search Bar

### **Mac:**

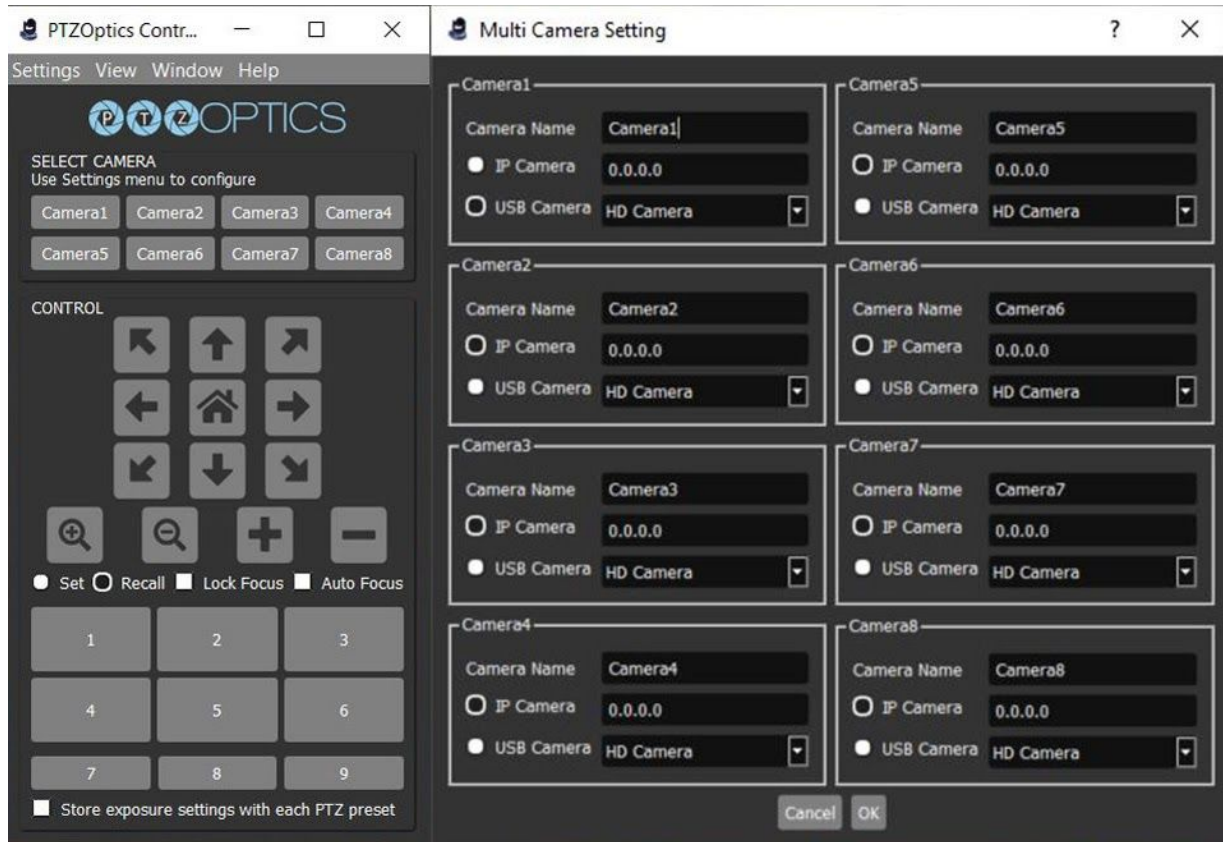
1. Download Application
2. Move application from your “Downloads” folder into the “Applications” folder
3. When you click to open you may see a window that says “PTZOptics cannot be opened because the developer cannot be verified.”
4. Click the Apple Icon in your system menu and select “System Preferences.”
5. Here you can allow the PTZOptics application to be granted access for use.
6. After this your application can be launched anytime

## Quick Start Guide

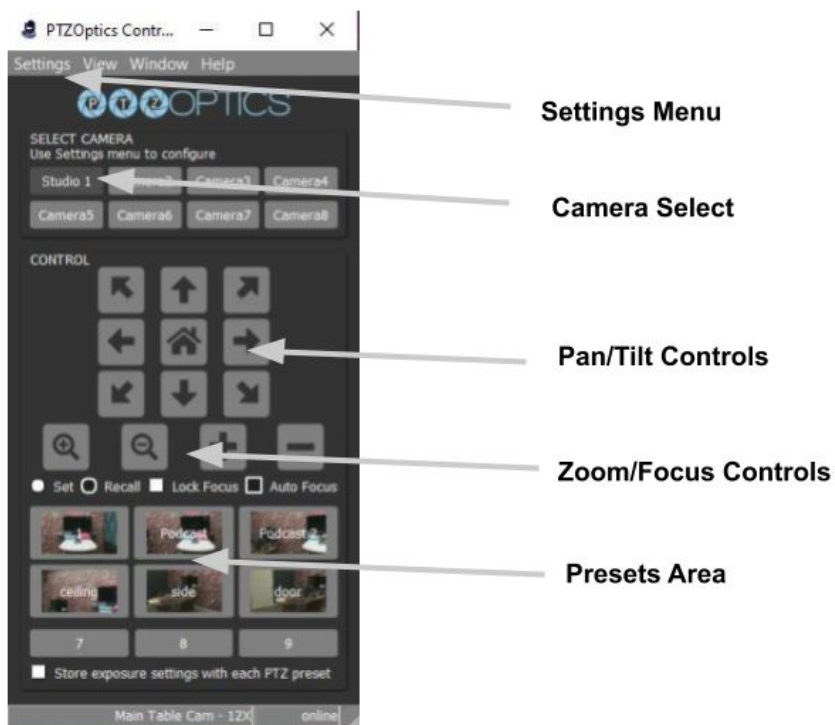
**Step 1.** Download the software and launch installation wizard.



**Step 2.** Open Software. From the “Settings” dropdown menu, open the “Multi Camera Setting” area to enter your cameras into the software. This software can control up to 8 cameras. Each camera can be connected via an IP address or a USB connection. Enter the camera’s name and connection information and click “Ok.”



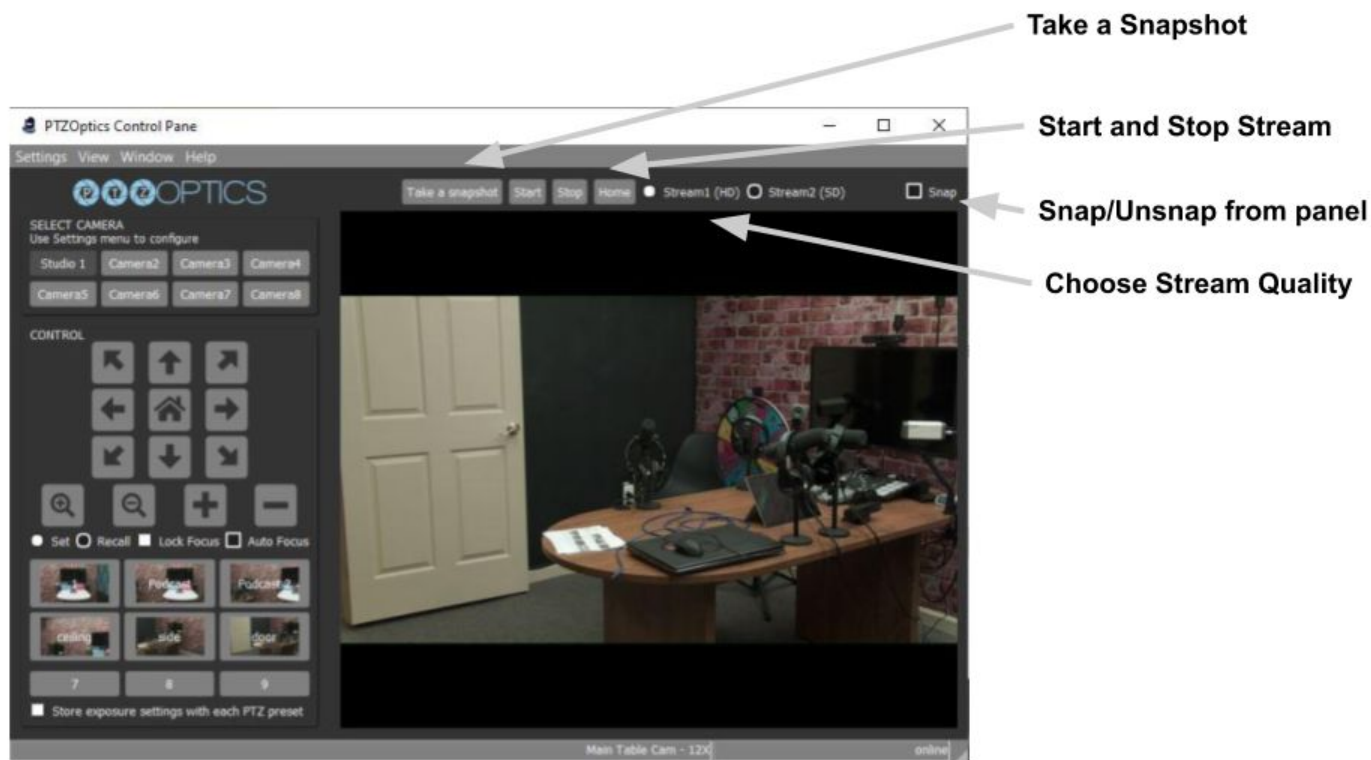
**Step 3.** Use the camera select area to select a camera you would like to control. Once you click the button, you will gain control of your camera. You can use the Pan, Tilt, and Zoom functionalities. You can also set and recall presets. The first six presets will store images you can use to see where each preset is saved.



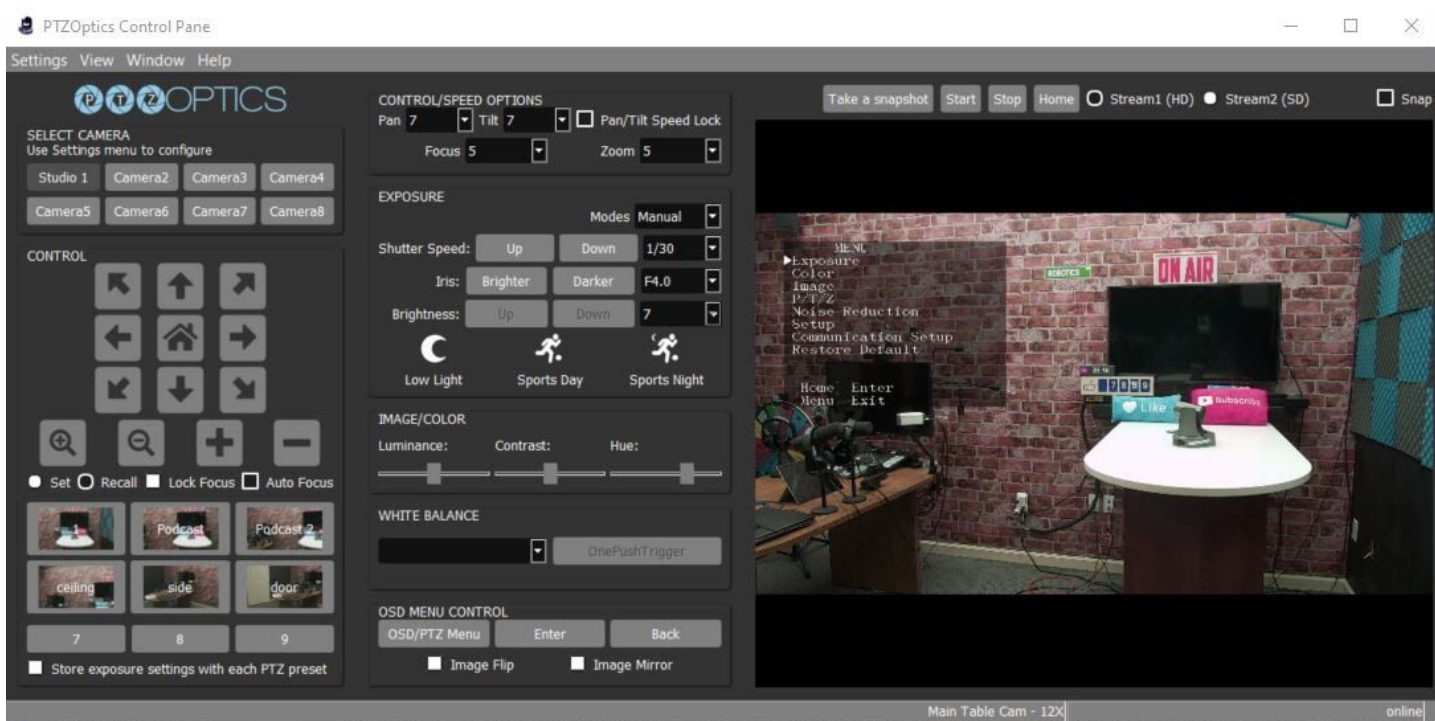
**Step 4.** Next you can open up a live preview window from the “Window” dropdown menu. Click “Preview Window” and the live video preview window will snap to the main control panel. In the live video preview window, you can choose to take a snapshot, start and stop video, return the camera to home, choose your video stream quality and snap/unsnap the video preview window from the control panel. When you unsnap the video preview window, you can drag the window into a second monitor and make it full screen.

**Note:** You can determine the snapshot path folder for the application in the “Settings” drop down menu.

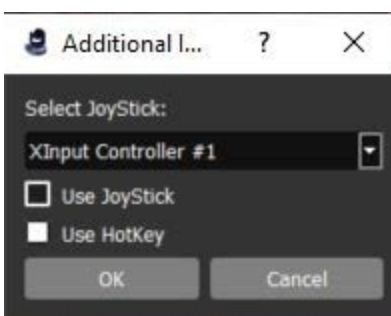




**Step 5:** You can view the application in compact mode, or open up an advanced settings view using the “View” dropdown menu. When you click the “Advanced View” you will gain access to control speeds, camera exposure settings, image settings and white balance options. You are also able to operate the cameras OSD (On Screen Display Menu).



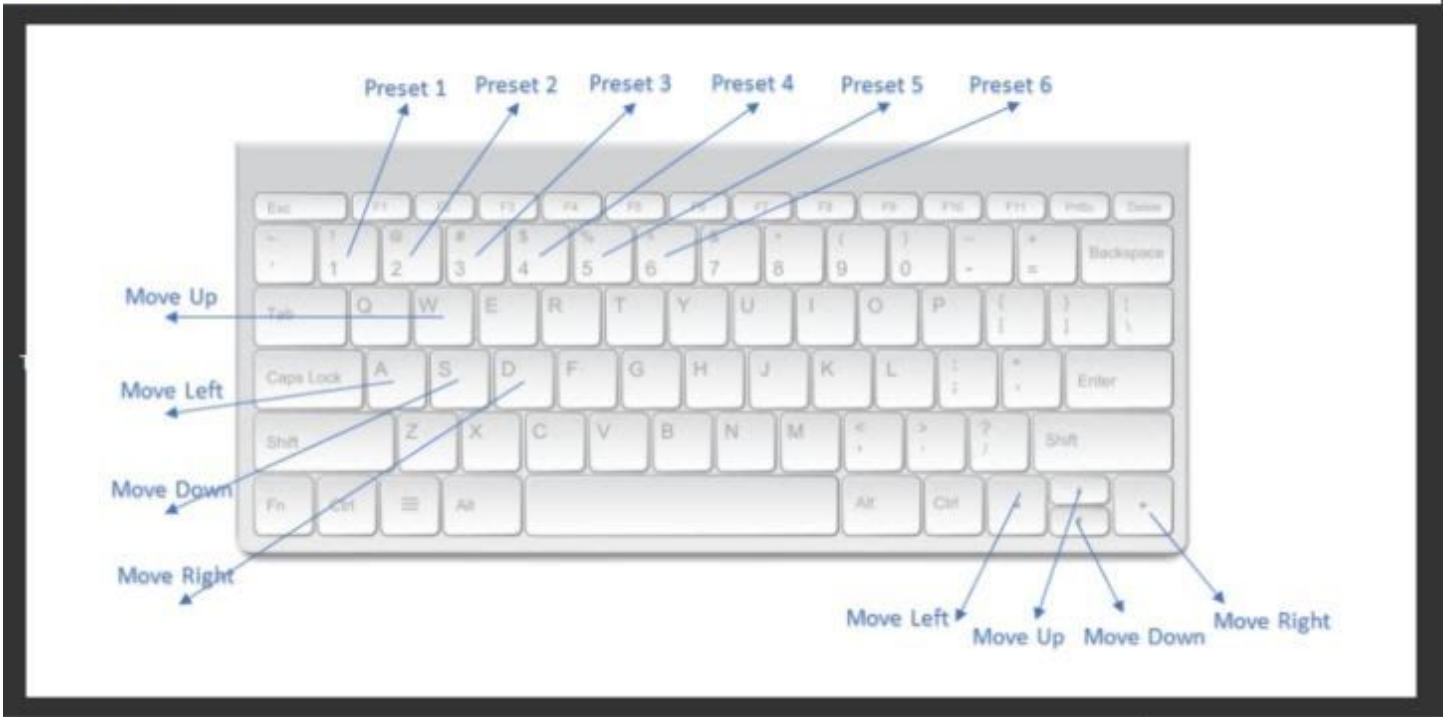
**Note:** The OSD menu is only viewable on “Stream 1.”



**Step 6:** Next, you can decide to set up a USB connected Xbox controller to control your camera. To do this, click “Additional Input Options” from the “Settings” dropdown menu. Here you can select a USB connected Xbox controller. You can also enable hotkeys to control the camera from your keyboard. Below you will find a explanation of the Xbox controller button mapping and keyboard hotkeys.

Xbox Help ? X

LT: Focus Out	RT: Focus In
LB: Zoom Out	RB: Zoom In
TL: Show OSD Menu(HD only)	A: Call Preset1
Y11: Connect to Camera1	X: Call Preset2
X11: Connect to Camera2	Y: Call Preset3
Y12: Connect to Camera3	B: Auto/Manual Focus
X12: Connect to Camera4	TR: Move to Home
DPad-Y1: Move Up	Y21: Move Up
DPad-X1: Move Right	X21: Move Right
DPad-Y2: Move Down	Y22: Move Down
DPad-X2: Move Left	X22: Move Left
Back: OBS Menu Back	Start: OBS Menu Enter



**Step 7.** You can decide to enable a camera status bar at the bottom of the application. This status bar will show helpful information such as the camera's name and status.



**Step 8.** You can set up pan and tilt limits for your PTZOptics camera in the “Settings” menu. This is ideal for areas where you do not want the camera to move past a certain point. You can move the camera to the limits of where you the camera should move and click the “Apply” buttons to set the limits of your PTZ camera.

**Step 9:** You can set up an image preview map within the preview window to make it easier to recall up to 9 camera presets. Using the “Image Preview Map” tool under the “Settings” dropdown menu, you can upload images into the preview window and still see a live video preview in a picture in picture setup. For example, you can capture a panoramic view of your space and place clickable preset images inside of the map to make recalling presets that much easier.

To start, click the “File” button to upload an image into the preview area. Then click “Show/Hide Bounding Boxes.” These bounding boxes can contain little pictures of their presets area where the camera will move when clicked. You can drag the bounding boxes over your uploaded image to make it easier to recall presets with better perspective for camera operators in a scene.

You can start by moving the camera to the preset location you would like to save. Then, select the preset 1-9, give the preset a name and click “Set Preset.” Before moving the camera you can also click “Take a snapshot” to load a snapshot into the bounding box. You can repeat the process for up to 9 bounding boxes. You can hide any bounding boxes you don’t need by clicking the box and selecting “Hide Current Bounding Box.”

## 14 **Copyright Notice**

The entire contents of this manual, whose copyright belongs to PTZ Optics, may not be cloned, copied, or translated in any way without the explicit permission of the company. Product specifications and information referred to in this document are for reference only and as such are subject to updating at any time without prior notice.